



CHICAGO'S CUMULATIVE IMPACT ASSESSMENT

Cumulative Impact Assessment

Committee on Environmental Protection and Energy

July 12, 2023



Project Summary

- Chicago's **Cumulative Impact Assessment** is co-led by community groups and the City to help identify neighborhoods that experience the greatest cumulative burden and inform decision-making around both policy and potential targeted investments the City should make.
- This Assessment is a critical step to promote environmental justice in Chicago – and one way that we are advancing the vision of **Healthy Chicago 2025**, the citywide plan to close Chicago's racial life expectancy gap by addressing the root causes of health.
- A baseline Assessment will be presented to Mayor Brandon Johnson and the Chair of the City Council Committee on Environmental Protection and Energy by October 31, 2023.

★ Current Context

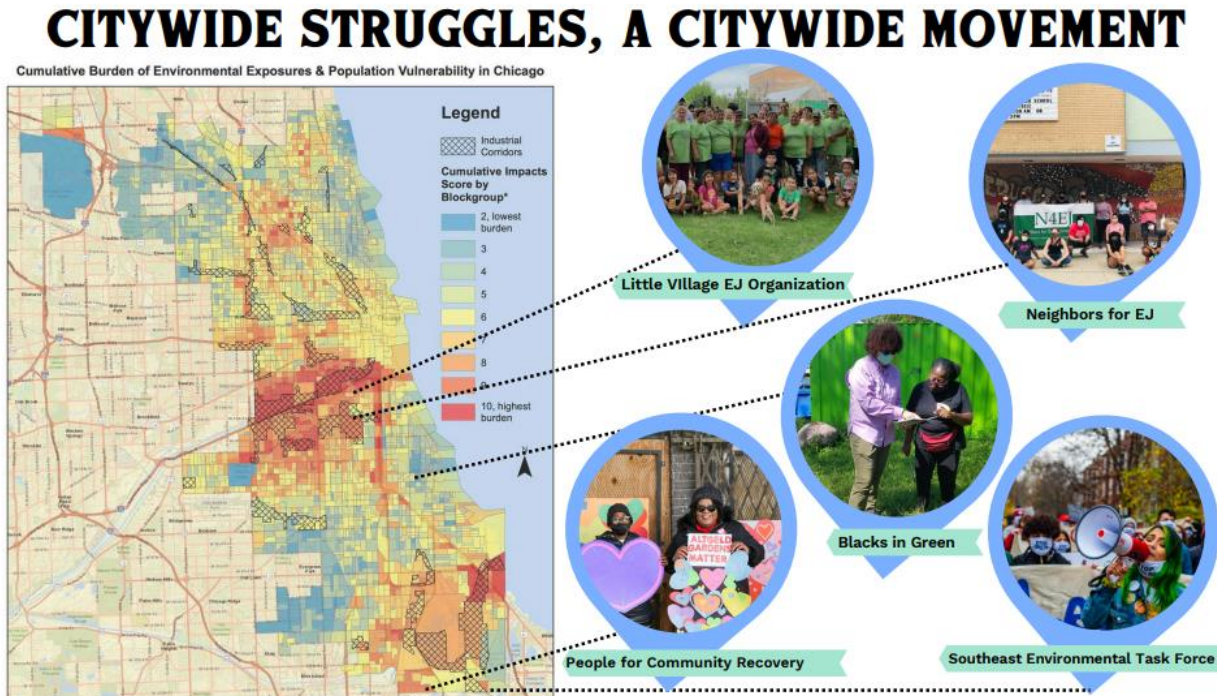


Image Source: People for Community Recovery

- For years Chicago's environmental justice organizations and community members have voiced concerns about cumulative impacts. They have called upon the City to recognize and remedy the harms caused by policies that compound cumulative burdens in certain parts of Chicago.
- Now, as part of the Chicago Recovery Plan, CDPH is conducting an Assessment co-led and co-designed with people and organizations who live these issues every day.

★ Project Overview



- **Community-led process:** The Environmental Equity Working Group (EEWG) – a group convened by the Office of Climate and Environmental Equity and made up of nongovernmental environmental justice leaders – guides how the Assessment is conducted and serves as our accountability body. CDPH and Southeast Environmental Task Force co-chair the project management team to ensure coordination across working groups.
- **Our Values:** For this Assessment, we strive to work in alignment with the shared values set out by the EEWG:
 - **ANTIRACISM** — Actively challenge and redress racist systems through processes, policies, and strategies.
 - **EQUITY-FOCUSED** — Consider who benefits and who is burdened by proposed solutions and how issues may disproportionately burden communities.
 - **FIRST VOICE** — Ability of individuals or community to express their condition in their own voice. Nothing about us without us: No policy should be decided without the direct participation of the members of the group being affected.
 - **ACCOUNTABILITY & TRANSPARENCY** — Practice mutual accountability and transparency by sharing data, information, and resources, and taking responsibility.



Progress Updates – Existing Community Input

- At the EEWG's request, CDPH analyzed relevant community input from previous public comments, hearings, and the media to help scope the Assessment.
- Findings are described in the Community Input Summary, which reflects the experience of Chicagoans from communities that experience environmental, health and social stressors – particularly low-income, Black and Latinx neighborhoods in the South and West Sides of Chicago.
- Learn more: chicago.gov/cumulativeimpact

THEME 1: ENVIRONMENTAL JUSTICE FOCUS AREAS



- Disproportionate impact of pollution on South and West sides of Chicago
- Polluting industries continue to move from white neighborhoods to overburdened Black and Latinx communities
- Normalization of pollution in overburdened communities
- Isolation from other neighborhoods
- Environmental hazards due to air and water pollution

THEME 2: ENVIRONMENTAL HEALTH OUTCOMES ASSOCIATED WITH POLLUTION EXPOSURE



- Asthma and respiratory concerns
- Cancer
- Mental health impacts
- Hidden toxins, odors and difficulty identifying source of health concerns
- Obstacles to health-promoting behaviors, impacting community longevity

THEME 3: SOCIO-ECONOMIC IMPACT ASSOCIATED WITH POLLUTING FACILITIES



- Questioning of burdens and benefits of polluting industries
- Lack of industrial economic benefits, relative to costs
- Lack of investment or reinvestment in overburdened communities
- Perception of a neighborhood being used as the City's dumpsite
- Corporate influence valued over neighborhood voice

THEME 4: DECISION-MAKING PROCESS CONCERNS



- Government disinvestment
- Perceptions of intentional damage
- Lack of government consistency
- Lack of transparency in criteria and data used to make decisions
- Use of inadequate criteria for pollution metrics
- Inauthentic community engagement and perception of a matter being a "done deal"
- Lack of corporate responsibility

THEME 5: COMMUNITY RECOMMENDATIONS



Recommendations for community-driven decision-making in government processes:

- Inclusion of all community members in decision-making
- Need for historical reckoning and address trauma as part of decision-making
- Importance of lived experience and community voices

Changes to existing ordinances, codes and processes:

- Regulations and standards for industrial operations
- Enforcement measures
- Increasing emphasis on proactive pollution prevention

Recommendations related to the implementation of solutions and regulatory actions:

- Investing in overburdened communities
- Community ownership
- Additional opportunities

Progress Updates – Working Groups

Data & Methods

- Co-chaired by CDPH, Little Village Environmental Justice Organization, and Greater Chicago Legal Clinic.
- Provides data on where pollution is coming from; demonstrating how burdens vary in communities across Chicago; and showing community-level vulnerability to pollution to inform policy decisions.
- Working to complete an EJ Map using proposed indicators by September 1, 2023, then develop the public-facing data tool(s) by the end of the year.

Community & Engagement

- Co-chaired by CDPH, People for Community Recovery, and Neighbors for Environmental Justice.
- Develops engagement process and implements strategies to meaningfully and authentically engage partner groups during all phases of the Assessment
- Gathers input and on-the-ground expertise from community members in neighborhoods most impacted and provides a foundation for longer-term ground truthing.
- Working to drive broad, ongoing public awareness of the Assessment and its findings. Learn more about ways to get involved at chicago.gov/cumulativeimpact.

★ Progress Updates – Working Groups

Policy

- Co-chaired by CDPH and Environmental Law and Policy Center.
- Co-designing a set of recommendations and a draft ordinance that captures the vision of environmental justice communities for addressing cumulative impacts.
- Preliminary policy recommendations fall under the following categories:
 - **Environmental Justice (EJ) Fundamentals:** Governance systems and structures ensure that City policies and processes promote EJ.
 - **Cumulative Impacts Elements:** City is required to consider environmental, health, and social stressors in decision-making.
 - **Community Benefits:** People who live in EJ Neighborhoods directly benefit from local development.

Interdepartmental

- Co-chaired by CDPH and the Office of Climate and Environmental Equity.
- An Environmental Justice Executive Order (EJ EO) issued in May 2023 formalized the Work Group, ensuring that it will lead and coordinate City-wide EJ strategy going forward.
- Working to complete the EJ Action Plan with specific strategies each member department will pursue to advance the City's EJ goal with meaningful community involvement by September 1, 2023, then publish a progress report by December 31, 2023 (and annually thereafter).

★ Get Involved

Public comment and feedback from impacted communities is essential to the success of the CIA initiative.

- **In-person Events:** Below is a calendar of current opportunities to join in-person events to provide input on the Cumulative Impact Assessment. Additional events will be added throughout the summer.
- **Online Survey:** If you're unable to join us at an event, you can also [share your thoughts online here](#) through July 31, 2023.
- **Draft Environmental Justice Action Plan:** The City invites public comments on the draft [Environmental Justice Action Plan](#) through July 31, 2023. Learn more at chicago.gov/cumulativeimpact.

July 12, 2023
<ul style="list-style-type: none">• Co-hosted with PCR and N4EJ in Pullman• 6:00 – 8:30 pm• Corliss High School• 821 East 103rd Street

July 15, 2023
<ul style="list-style-type: none">• Community-based event co-hosted by PCR and Maryland Block Club• 11:00 – 2:00 pm• Intersection of East 76th St. And South Maryland Avenue

July 22, 2023
<ul style="list-style-type: none">• Block Party with PCR (community-based event)• 9:00 am – 11:00 am• Golden Gate Park• 13000 South Eberhart Ave.

July 27-30, 2023
<ul style="list-style-type: none">• Fiesta del Sol• Ashland and Cermak to Morgan and Cermak

Early Aug. 2023
<ul style="list-style-type: none">• Co-hosting with PCR and N4EJ• 6:00 – 8:00 pm• McKinley Park



Next Steps

- Continue community engagement and provide additional ways to get involved through in-person events this summer, along with an online survey and opportunity to provide public comments on EJ Action Plans through July 31st.
- Complete baseline Assessment by September 1, 2023.
- Present the baseline Assessment to Mayor Brandon Johnson and the Chair of the City Council Committee on Environmental Protection and Energy by October 31, 2023.

Thank you!



[Chicago.gov/Health](https://www.chicago.gov/Health)



HealthyChicago@cityofchicago.org



[@ChicagoPublicHealth](https://www.facebook.com/ChicagoPublicHealth)



[@ChiPublicHealth](https://twitter.com/ChiPublicHealth)