

**BUSINESS**

# **ComEd files to recover \$234 million in added costs, but electricity delivery charges set to decrease next year**



The ComEd headquarters building in the 3400 block of North California Avenue in Chicago, July 17, 2020. (Brian Cassella/Chicago Tribune)



By **ROBERT CHANNICK** | [rchannick@chicagotribune.com](mailto:rchannick@chicagotribune.com) | Chicago Tribune

PUBLISHED: May 1, 2026 at 6:34 PM CDT | UPDATED: May 2, 2026 at 10:25 AM CDT

---

ComEd filed for a \$234.3 million rate reconciliation Friday, seeking to recover cost overruns the utility incurred in 2025 from customers on their monthly bills next year. But on the brighter side, total electricity delivery charges are set to go down in 2027 compared to this year.

The utility says the added costs were related to connecting [data centers](#) and other new businesses, as well as electrification efforts such as building out EV charging infrastructure in 2025. If approved, the cost reconciliation would add \$2.97 per month to the distribution charges on the average residential customer bill beginning in January 2027.

The Illinois Commerce Commission is expected to render a decision in December.

The 2025 cost reconciliation will be partially offset by a \$128 million revenue adjustment filed by ComEd in March. The utility “overcollected” from customers based on a higher projected load for 2025 than the actual usage, according to Jason Decker, vice president of regulatory policy at ComEd. If the revenue reconciliation is approved by the ICC, ComEd will also issue a \$0.56 monthly credit embedded in the delivery charges on the average residential customer bill next year, he said.





The net result: the combined reconciliation of actual costs and revenues for 2025 will add \$2.41 per month to the average ComEd customer bill in 2027, which is \$1.22 per month less than the adjustment added to this year's bills. That means delivery charges should go down for most customers beginning in January.

"Reconciliation proceedings are a valuable means for ensuring that electricity rates are reasonable and aligned with prudently incurred costs," Gil Quiniones, president and CEO of ComEd, said in a statement. "Sometimes this process leads to a credit for customers and sometimes it results in a charge, but it always reflects our commitment to transparency, efficiency and delivering value to the communities we serve."

Last year, the ICC [sliced \\$25.4 million](#) from ComEd's \$268.5 million rate reconciliation request to recover extra capital expenses the utility said it incurred above its projected budget in 2024. The approved \$243 million adjustment is adding about \$3.10 per month to the average residential bill this year.

In addition, last year's revenue reconciliation for 2024 added another \$0.53 per month to the average bill, bringing the total reconciliation cost to \$3.63 per month being paid by the average ComEd customer this year.





While ComEd is touting the 2025 reconciliation request as a decrease over the amount being paid by customers this year, it still represents an increase over the delivery charges previously approved by the ICC. State regulators will have the better part of a year to analyze the 2025 cost reconciliation sought by ComEd before ruling in December.

ComEd customers are already dealing with higher delivery charges after the ICC approved a four-year, [\\$606 million rate hike](#) in 2024 as part of the utility's power grid improvement plan, increasing average residential customer bills by \$1.84 per month through 2027.

In January, ComEd filed a new \$15.3 billion, [four-year grid plan](#) with the ICC to meet projected increased electricity demand among its 4.1 million customers across northern Illinois. While ComEd will not file a rate request reflecting the grid plan until next year, it is projected to increase residential customer delivery charges by about \$3 per month starting in 2028, the utility said.

With data centers [driving](#) up the cost of electricity, the ICC recently approved a tariff proposal by ComEd requiring increased deposits from developers to protect ratepayers against multimillion-dollar [projects](#) that don't come to full fruition. The ICC's [tariff decision](#) also opened up an investigation into how ComEd can serve the increasing number of large-load customers without shifting the cost burden onto existing customers.

ComEd said in its tariff proposal it has experienced "an unprecedented surge" in applications from new customers with exceptionally large service requests. There are currently about 100 [large-load projects](#) in the developmental pipeline, most of which are for data centers, the utility told the Tribune.

In addition to increased delivery charges, ComEd customers have seen supply charges — the cost of electricity — [skyrocket](#) over the past year, in large part due to increased demand from the proliferation of power-hungry data centers.

**Sign up for Working Lunch:** Get the latest business news headlines, delivered to your inbox Monday through Friday.

By signing up, you agree to our [Terms of Use](#), [Privacy Policy](#), and to receive emails from Chicago Tribune.

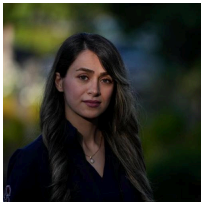
PJM Interconnection manages the electricity supply grid for 13 states, including ComEd's 4.2 million customers in northern Illinois. In July, an annual capacity auction for expected reserve electricity needed during peak demand jumped 22% to a then-record \$329.17 per megawatt-day, meaning even higher supply prices for ComEd and its customers beginning in June 2026.

Those supply charges could go up even more down the road after PJM released the results of a new auction in December, setting the capacity price at a record \$333.44 per megawatt-day beginning in June 2027.

*rchannick@chicagotribune.com*

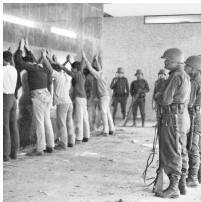
## MORE FROM OUR NEWSROOM

---



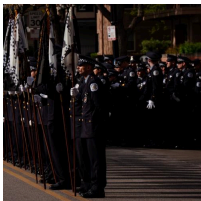
### US lifts hold on immigration applications for doctors, but leaves others waiting

Friday, May 8



### Letters: US tampering has led to our immigration crisis

Friday, May 8



### 'A cop's cop': Mourners gather to remember slain Chicago police Officer John...

Friday, May 8



### 41-year-old man dead in car accident in North Lawndale

Friday, May 8



### Metra train collides with truck, injures 2 at Linden crossing in Wilmette

Thursday, May 7



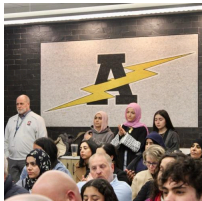
### Chicago Cubs complete sweep for 9th straight win overall and 15th in a row at 'electri...

Thursday, May 7



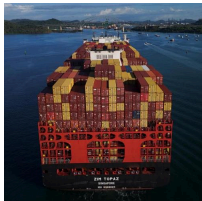
### Chicago baseball report: Cubs adjusting arms on the fly — and White Sox prospe...

Friday, May 8



### Orland District 230 appoints Arabic language supporter Moe Hammad to board

Thursday, May 7



### Federal court rules against global tariffs President Trump imposed after...

Thursday, May 7

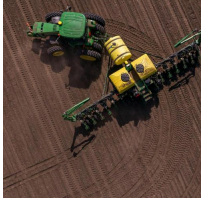


### IRS may owe taxpayers a refund for coronavirus-era



## DoorDash plans to spend more than \$50 million on gas price relief for its drivers...

Wednesday, May 6



## As planting begins, Minnesota farmers wary of war's impact

Wednesday, May 6

2026 > May > 1